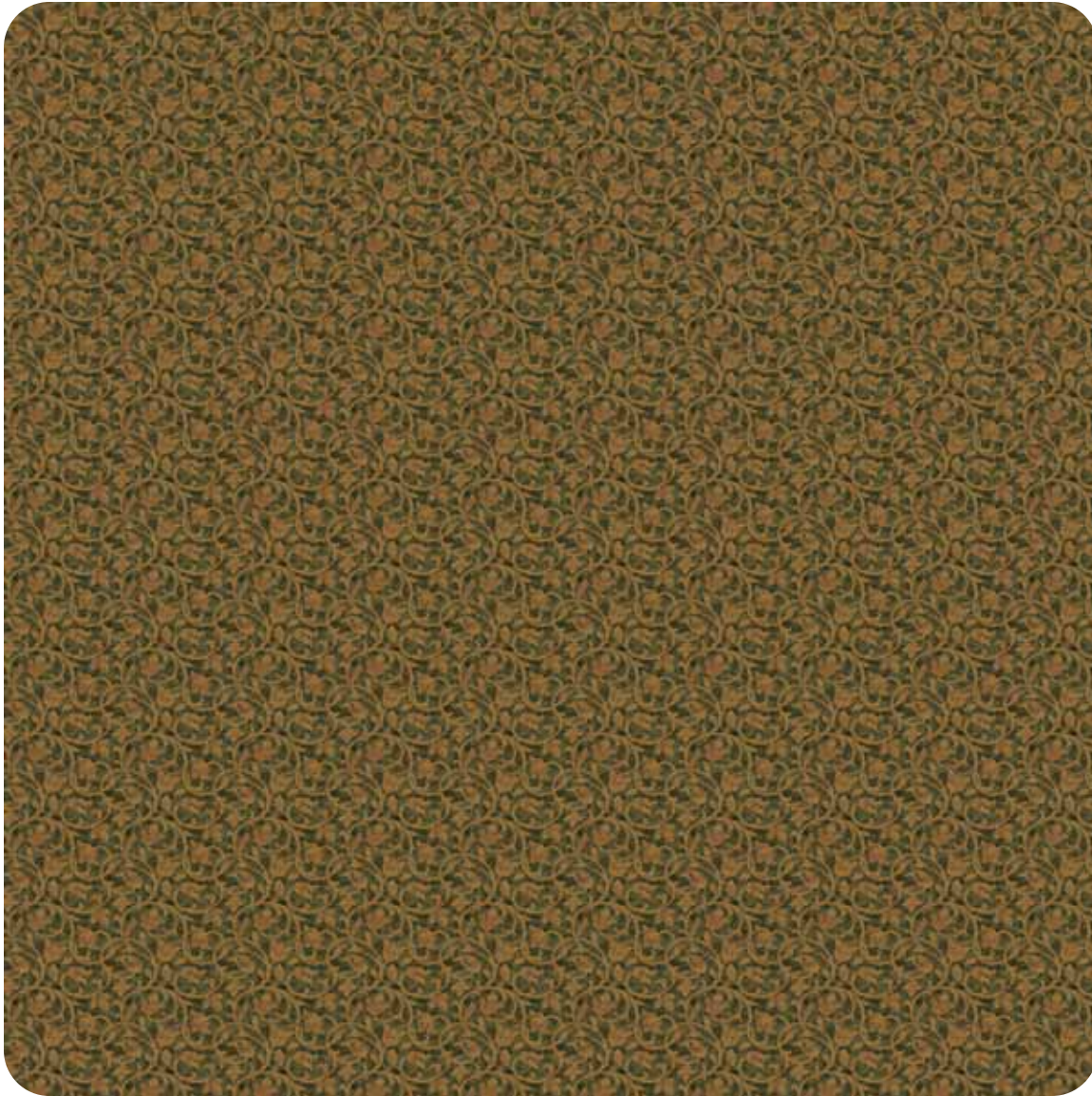


*designed for*  
S E N I O R L I V I N G



Angelina

(organic motifs)

# Angelina (organic motifs)

colors



**31** SOLID      **2553** RUNNER



**2552** FIELD 1



**47** SOLID      **2560** RUNNER



**2559** FIELD 1



**81** SOLID      **2567** RUNNER



**2566** FIELD 1



**77** SOLID      **2574** RUNNER



**2573** FIELD 1

# Angelina (organic motifs)

colors



57 SOLID

2581 RUNNER



2580 FIELD 1



17 SOLID

2588 RUNNER



2587 FIELD 1



82 SOLID

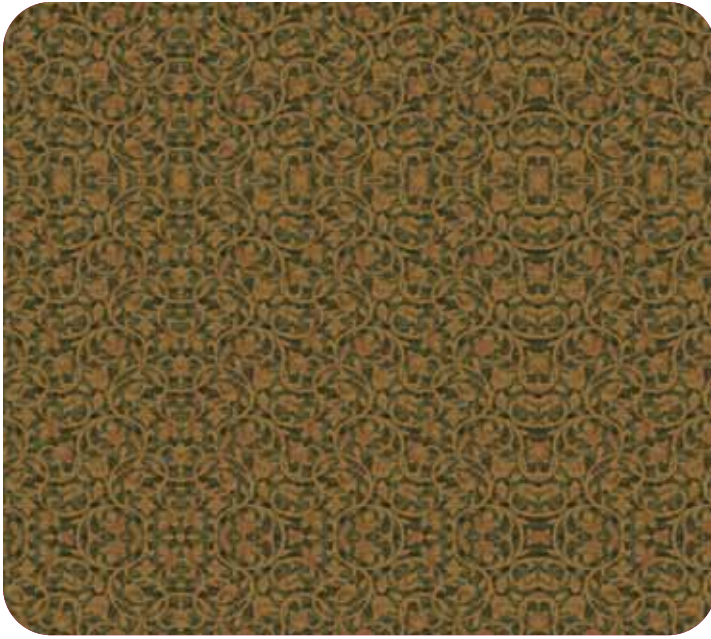
2595 RUNNER



2594 FIELD 1

# Angelina (organic motifs)

components



**2580** FIELD 1  
40.5" W x 40.5" L  
(102.87 cm x 102.87 cm)



**2585** BORDER  
27" W x 40.5" L  
(68.58 cm x 102.87 cm)



**2581** 6 FOOT RUNNER  
81" W x 40.5" L  
(205.74 cm x 102.87 cm)

**2583** 8 FOOT RUNNER  
162" W x 40.5" L  
(411.48 cm x 102.87 cm)

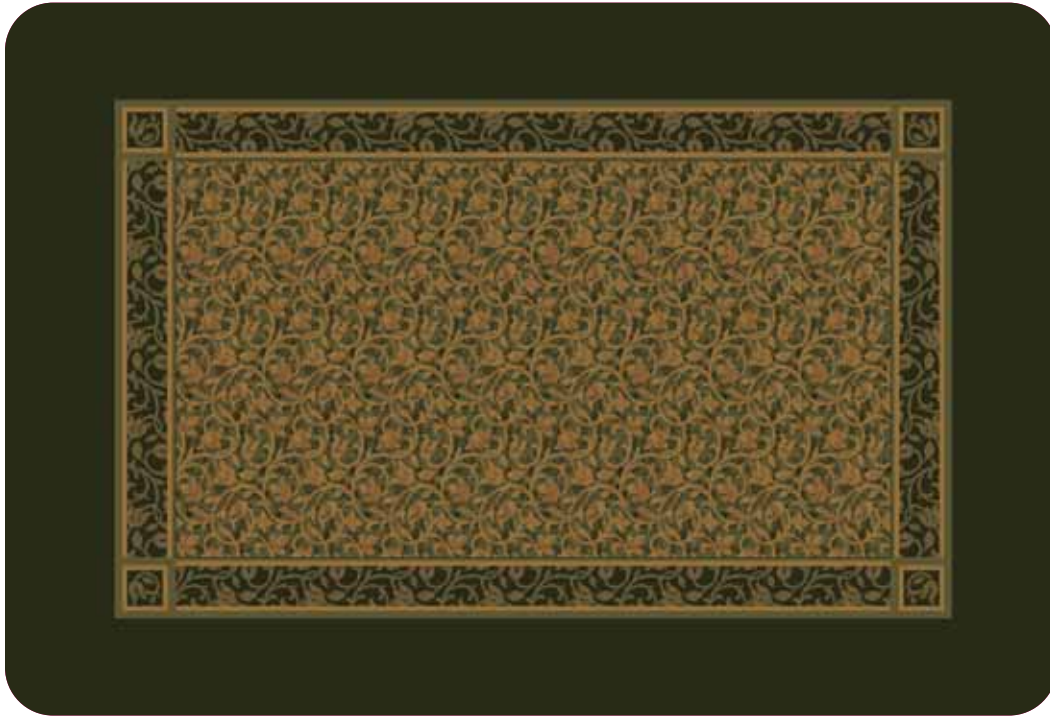


**2582** 6 FOOT END CAP  
81" W x 36" L  
(205.74 cm x 91.44 cm)

**2584** 8 FOOT END CAP  
162" W x 36" L  
(411.48 cm x 91.44 cm)

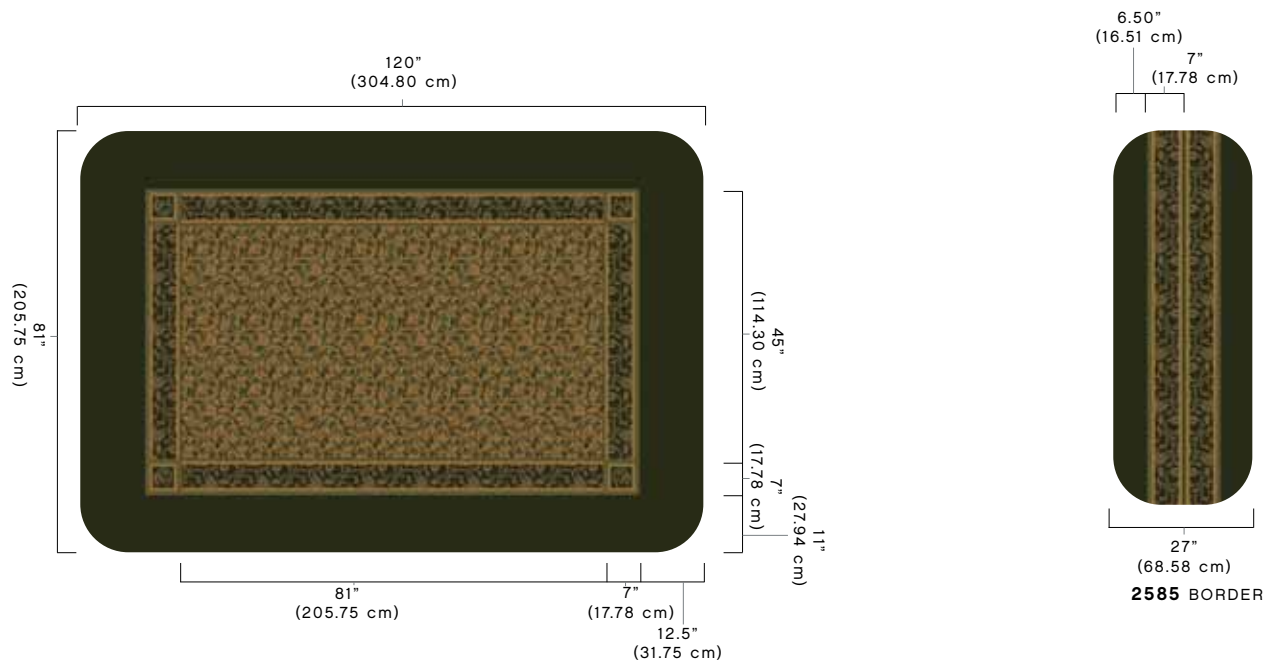
Angelina (organic motifs)

components



**2586** RUG  
81" W x 120" L  
(205.74 cm x 304.80 cm)

component	color							repeat
FIELD 1	2552	2559	2566	2573	2580	2587	2594	40.5" W x 40.5" L (102.87 x 102.87 cm)
6' RUNNER	2553	2560	2567	2574	2581	2588	2595	81" W x 40.5" L (205.75 x 102.87 cm)
6' CAP	2554	2561	2568	2575	2582	2589	2596	81" W x 36" L (205.75 x 91.44 cm)
8' RUNNER	2555	2562	2569	2576	2583	2590	2597	162" W x 40.5" L (411.48 x 102.87 cm)
8' CAP	2556	2563	2570	2577	2584	2591	2598	162" W x 36" L (411.48 x 91.44 cm)
BORDER	2557	2564	2571	2578	2585	2592	2599	27" W x 40.5" L (68.58 x 102.87 cm)
RUG	2558	2565	2572	2579	2586	2593	2600	81" W x 120" L (205.75 x 304.80 cm)
SOLID MAX COLOR ID	31 M28	47 F43	81 L22	77 H52	57 L53	17 E39	82 L38	



2586 RUG

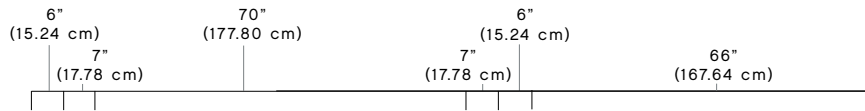
2585 BORDER

# Angelina (organic motifs)

ordering information

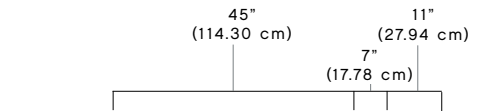


**2580** FIELD 1



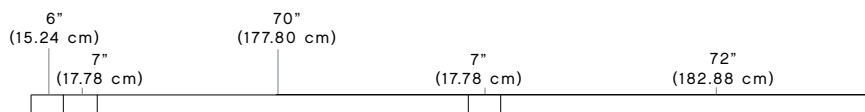
**2583** 8' RUNNER

162" (411.48 cm)

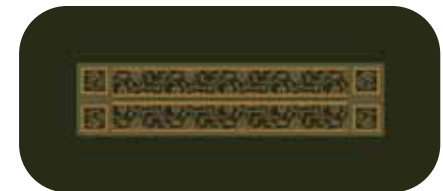
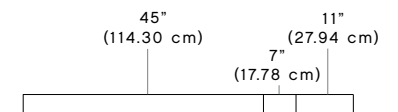


**2581** 6' RUNNER

81" (205.74 cm)



**2584** 8' END CAP



**2582** 6' END CAP

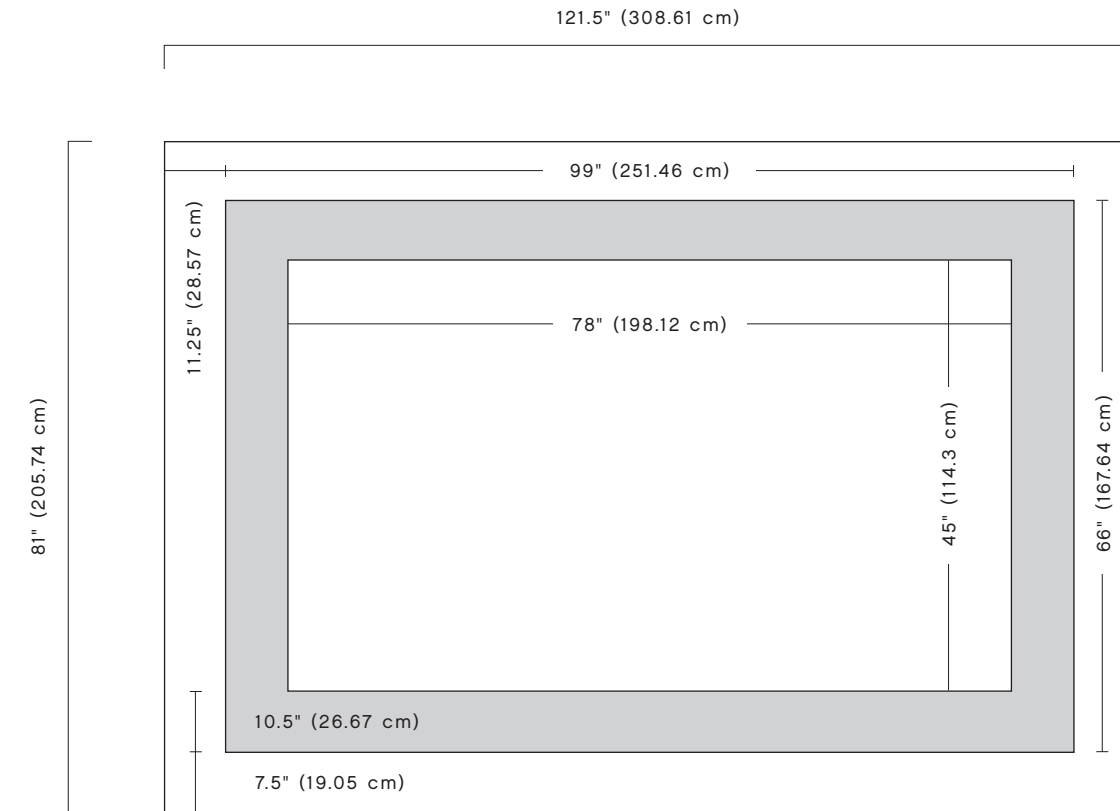
# ironworks



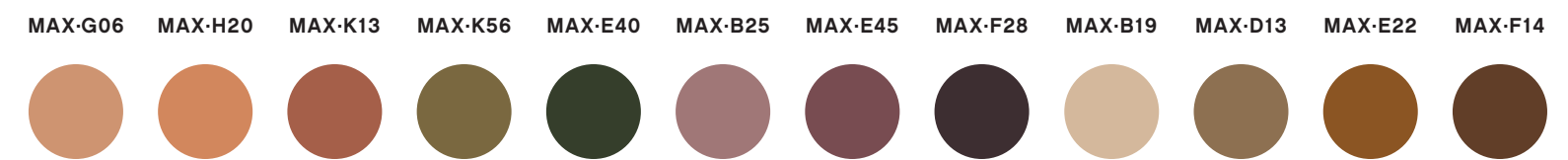
**MAXEXPRESS**  
Milliken Hospitality

# ironworks

## rug/runner components

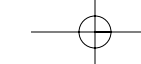


## color palette: marrakesh



To put the power of Max to work for you, call **1.800.334.7749** from 8-5 EST., Monday-Friday, or email [possibilities@milliken.com](mailto:possibilities@milliken.com)

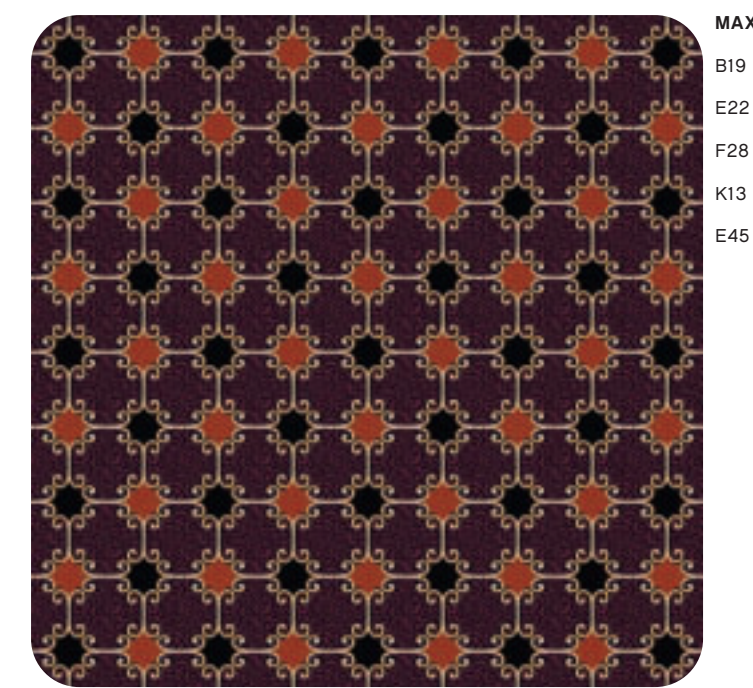
**MAXEXPRESS**  
Milliken Hospitality



ironworks



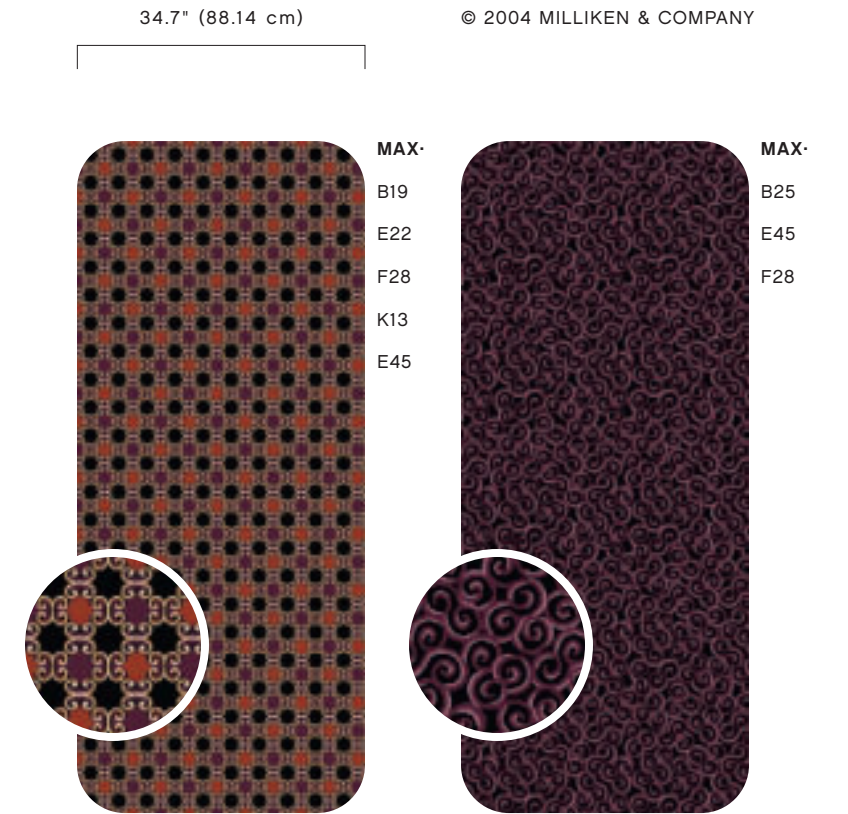
**2212 BROADLOOM A**  
40.5" W x 40.5" L (102.87 cm x 102.87 cm)



**2214 BROADLOOM C**  
18" W x 18" L (45.72 cm x 45.72 cm)



**2215 BROADLOOM D**  
18" W x 18" L (45.72 cm x 45.72 cm)

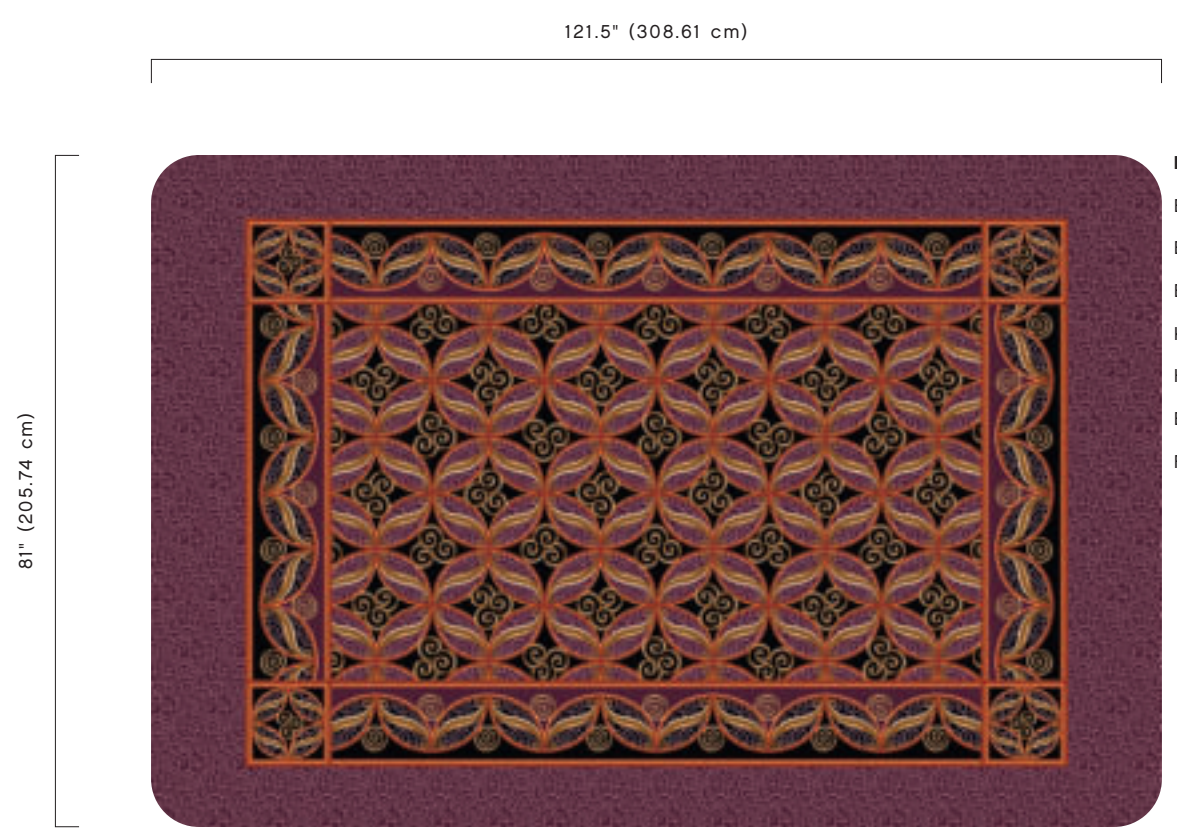


**2216 BROADLOOM E**  
6.75" W x 6.75" L  
(17.15 cm x 17.15 cm)

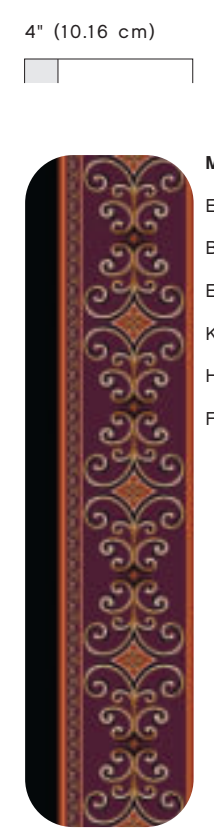
**2217 BROADLOOM F**  
32.4" W x 32.4" L  
(82.3 cm x 82.3 cm)

© 2004 MILLIKEN & COMPANY

IRONWORKS



**2221 RUG**  
81" W x 121.5" L  
(205.74 cm x 308.61 cm)



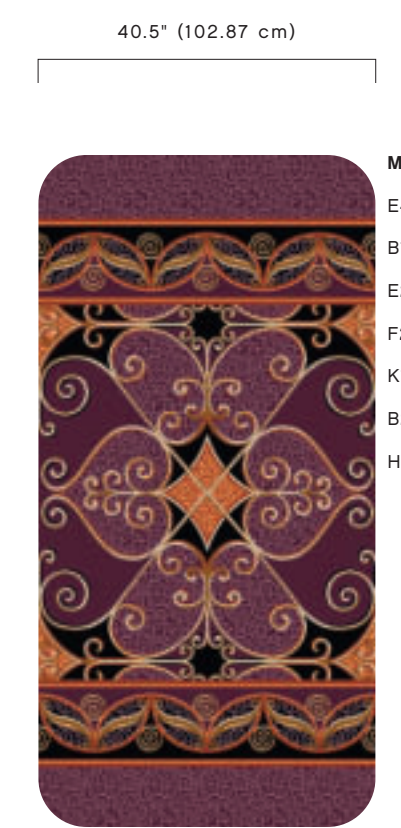
**2219 BORDER A**  
20.25" W x 20.25" L  
(51.44 cm x 51.44 cm)  
Out fill color: MAX-F28



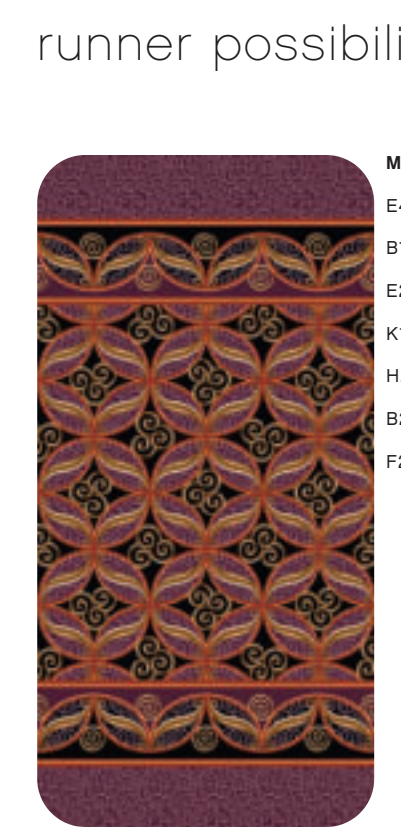
**2220 BORDER B**  
13.5" W x 13.5" L  
(34.29 cm x 34.29 cm)  
**2218** OUT FILL also available



**2222 ENDCAP**  
81" W x 11.25" L  
(205.74 cm x 28.57 cm)  
**2218** OUT FILL also available



**2223 RUNNER A**  
81" W x 40.5" L  
(205.74 cm x 102.87 cm)

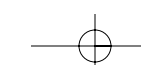
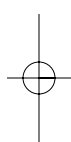
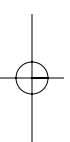


**2224 RUNNER B**  
81" W x 27" L  
(205.74 cm x 68.58 cm)



**2225 RUNNER C**  
81" W x 54" L  
(205.74 cm x 137.16 cm)

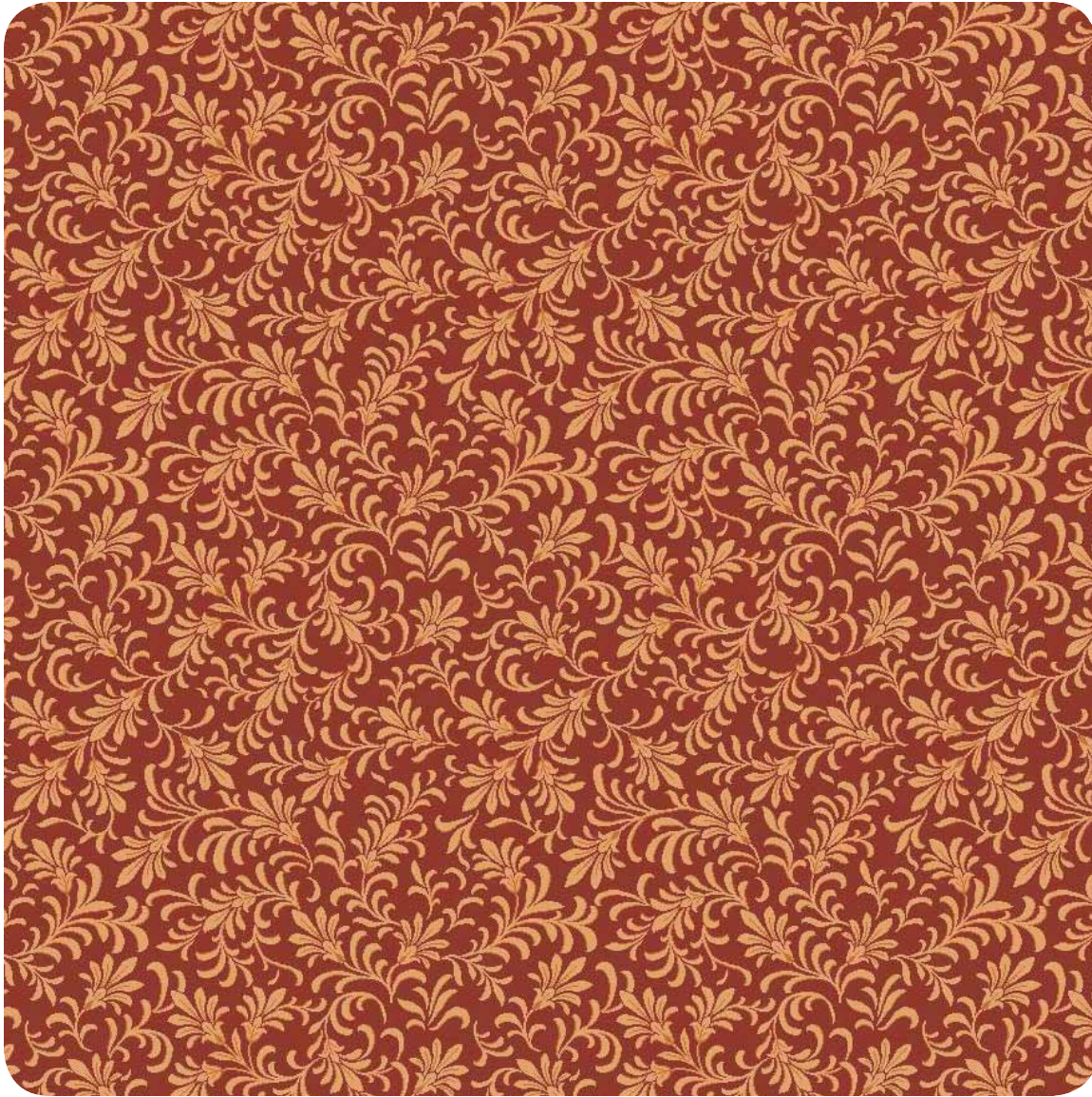
runner possibilities



# DESIGN *for* BUSINESS

With the variety of needs in today's Main Street businesses, you need a wide selection of designs and colors. This was the inspiration for Milliken's new Design for Business™ collection. It provides an array of designs that complement traditional and contemporary interiors, but utilizes a broad color palette that enhances almost any business decor. The collection includes small, medium and large-scale repeats that are printed on STAINMASTER® nylon carpet utilizing our advanced Millitron high-definition dyeing technology.

# DESIGN *for* BUSINESS



COLETTA C/26

(GOVERNMENT)

# COLETTA

(GOVERNMENT)



17 DEEP OLIVE



20 RAVEN



23 WEATHERED GREEN



26 AUBURN



29 PARTRIDGE BROWN